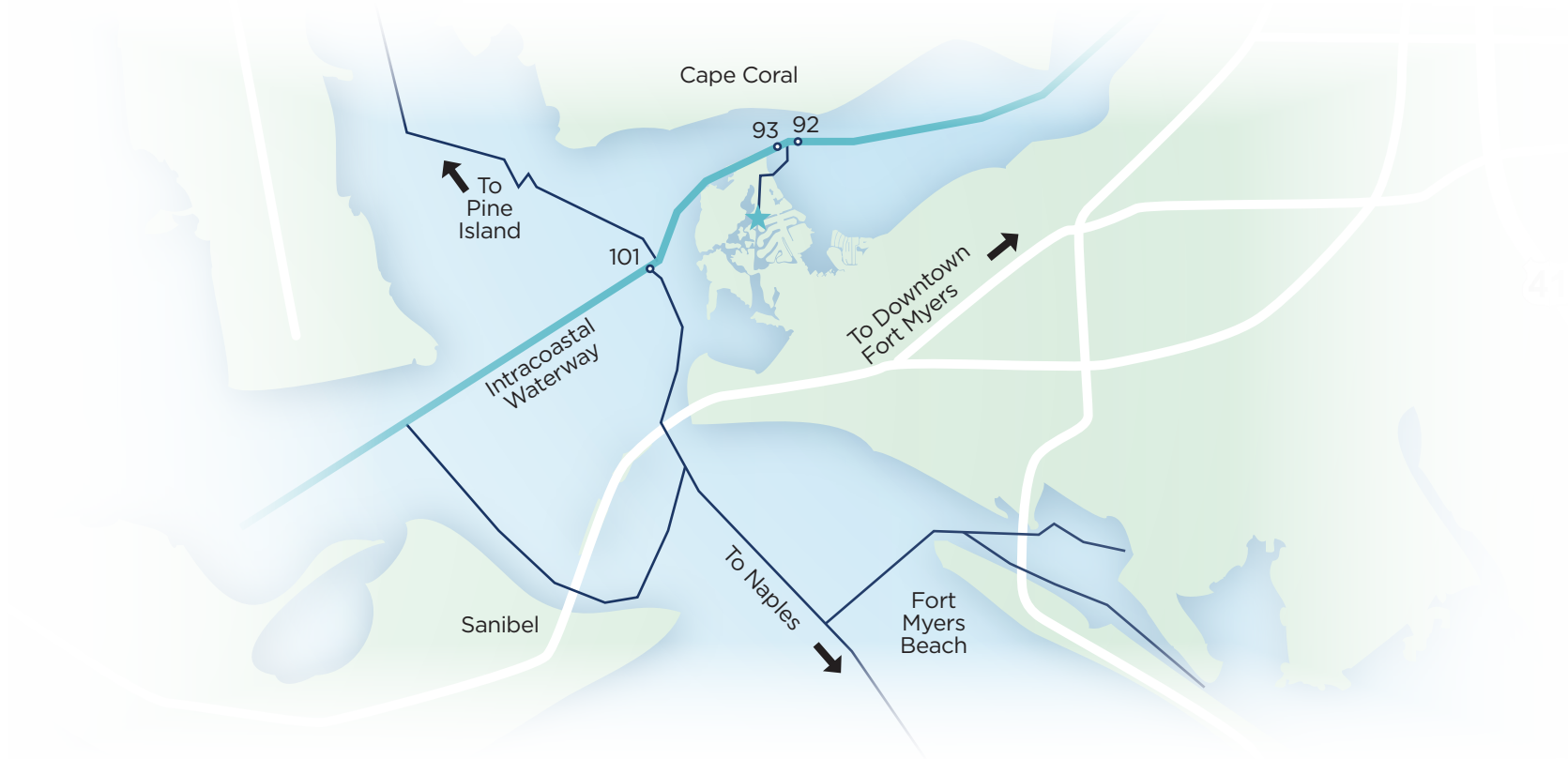


Boating Map



The deepwater canal that leads to our marina can be found between markers 92 and 93 on the Intracoastal Waterway (26.528 degrees latitude, 81.996 degrees longitude). Guest slips at the marina are #80-#95. Please keep in mind that manatee protection zones are in effect all year for the waterways surrounding Shell Point, so maintain no-wake speed. The nearest public boat ramps are located in Punta Rassa (about 2 miles south of Shell Point) and on Sanibel.

If you're interested in guided tours of Shell Point, we can arrange an appointment for you to coincide with your visit. Just call the Welcome Center at 1-800-780-1131, Monday through Friday from 8 a.m. to 4:30 p.m., and we will answer all your questions.

This map should not be a substitute for the detailed information found in local navigational charts.