

SHELL POINT

HURRICANE

20  24

PREPARATION GUIDE

2024

STORM NAMES

ALBERTO

BERYL

CHRIS

DEBBY

ERNESTO

FRANCINE

GORDON

HELENE

ISAAC

JOYCE

KIRK

LESLIE

MILTON

NADINE

OSCAR

PATTY

RAFAEL

SARA

TONY

VALERIE

WILLIAM

Hurricane Season: June 1 through November 30

Throughout hurricane season, it's important to be ready for whatever the weather may bring. While these storms can be unpredictable, preparing ahead of time can help reduce risks and ensure that you have what you need during and after a hurricane.

Prepare Now

By taking a few simple steps, you can find peace of mind knowing that you, your pets, and your home are prepared for a storm.

Food & Water - Purchase a few gallons of water along with non-perishable food items such as peanut butter, canned tuna, canned chicken, cereal, canned fruits, nuts, and other snacks. It's a good idea to freeze a loaf of bread, and make sure you have a manual can opener.

Electronics - Keep a flashlight and battery-powered radio nearby and purchase extra batteries for small fans or other items that might be helpful if the power goes out.

Medical Supplies - If you depend on oxygen, ensure you have at least a three-day supply throughout hurricane season. It's also advisable to have an extra supply of briefs, wipes, and medications if you use them.

Evacuation Plans - In the event of an evacuation order, residents must leave their homes. Create a personal evacuation plan that includes a list of pre-arranged or pre-selected destinations in different parts of Florida or even out of state and plan to travel before the weather turns severe. If you don't drive, consider pre-arranging travel with a neighbor.

Planning for Pets - Shell Point shelters are unable to accept pets, so ensure your evacuation plans include arrangements for them. Websites like PetsWelcome.com and BringFido.com provide helpful information for those traveling with four-legged friends.

Storm Communication – [ShellPoint.org/Storm](https://www.shellpoint.org/storm)

The Shell Point Hurricane Management Team will provide information via several communication vehicles. The primary source for information will be the community's storm webpage – [ShellPoint.org/Storm](https://www.shellpoint.org/storm). This page is open to the public and should be shared with loved ones to keep them informed. Residents will also receive frequent emails and notices from the Point Alert system that sends texts and voice recordings. Recorded messages will also be available by calling (239) 339-2541 and by viewing Shell Point TV – Channel 8. Members of the Residents' Council and court representatives will also be informed and available to answer questions.



Evacuation Guidelines

The Shell Point Hurricane Management Team may activate the community's evacuation plan approximately 36 to 72 hours prior to landfall, based on the following criteria:

- An assessment of the distance, relative to Shell Point, that tropical-force winds extend out from the storm's center, the overall size and strength of the approaching storm, and the potential tidal surge.
- Recommendations from Lee County Emergency Management and Shell Point's consulting meteorologist.

Evacuating to a Shell Point Hurricane Shelter

Available Shelters - If an evacuation is ordered, all skilled nursing, assisted living, and medically-qualified independent living residents will shelter at the Larsen Health Center. Independent living residents who are unable to evacuate will shelter at the Shell Point parking garage located on The Island. Water, food, and reclining chairs will be provided.

Shelter Kit - Shell Point has provided each resident with a tote bag for use as their designated shelter kit. These totes are also available by contacting the Shell Point Call Center. Refer to the Hurricane Shelter Kit list on the back cover to review what you should pack. Be sure to have your bag clearly tagged with your name and address.

Medications & Supplies - Include a two-week supply of medications and pack other medical supplies (including an ample supply of briefs and wipes if needed). Portable oxygen tanks should be used during transportation to and from the shelter. Following shelter setup, generators will be able to accommodate oxygen concentrators. Emergency supplies of oxygen will also be available.

Transportation - Transportation to and from Shell Point shelters will be provided. Do not go to the shelter on your own.

Automobiles - During evacuation, Shell Point parking garages cannot accommodate a high number of vehicles, and residents must leave automobiles and golf carts in their designated parking spaces. Unplug all golf cart charging systems and secure any bicycles, carts, or other loose items in the garage before you leave.

Resident Hurricane Seminar

Wednesday, May 8 • 10:30 a.m. • The Village Church on The Island

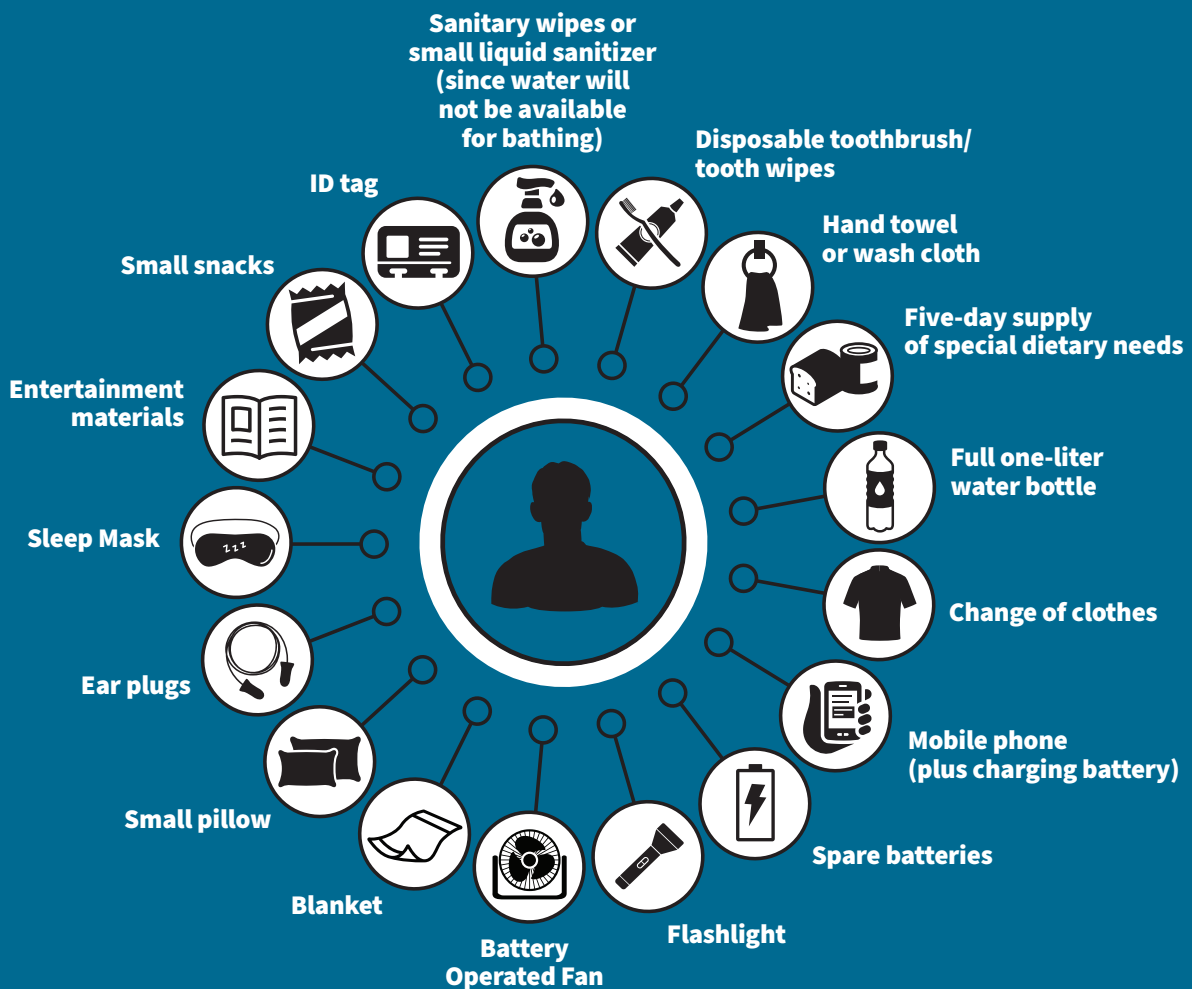
Attend the 2024 Resident Hurricane Seminar to hear from the Shell Point Hurricane Management Team and our consulting meteorologist. This recorded seminar will also be available at ShellPoint.org/Storm.

HURRICANE SHELTER KIT

BASIC EMERGENCY ITEMS



SHELL POINT HAS PROVIDED EACH RESIDENT WITH A COMPLIMENTARY TOTE BAG TO PACK HURRICANE KIT ITEMS IN ADVANCE OF ANY EVACUATION. ONCE FILLED WITH RESIDENT-SUPPLIED ITEMS, THE BAG WILL BE TRANSPORTED TO THE SHELTERS AT THE SAME TIME AS THE RESIDENT. CONSIDER INCLUDING THE FOLLOWING ITEMS:



Notify the 24-hour Call Center at (239) 454-2190 regarding any emergency maintenance or security situations.

Shell Point is a nonprofit ministry of The Christian and Missionary Alliance Foundation, Inc. ©2024 Shell Point. All rights reserved. HR-531-24